



Queen



Split King



CONTENTS

Advisory.....	4
Acoustics.....	5
Installation	6
Remote Control Function.....	10
Tandem Syncing (One remote control operating both bases in tandem)	11
Troubleshooting	12
1-3-25 Warranty	13



If adjustable base does not operate or if parts are missing, call:

1.800.888.3078

Do not contact retail store or dealer.

ADVISORY

IMPORTANT INFORMATION

READ THE FOLLOWING INFORMATION CAREFULLY BEFORE USING THIS PRODUCT



FOR OPTIMUM ADJUSTABLE BASE OPERATION, USE A GROUNDED, ELECTRICAL SURGE PROTECTION DEVICE (NOT INCLUDED). FAILURE TO USE A SURGE PROTECTION DEVICE COULD COMPROMISE SAFETY OR CAUSE PRODUCT MALFUNCTION.

ELECTRICAL RATING

Electrical components are rated for 110/120 voltage, 60Hz, 100 watt.

ELECTRICAL GROUNDING

This product is equipped with a polarized or grounded electrical power cord. The power cord will only fit into a grounded, electrical surge protection device (not included) or a grounded electrical outlet.

WARRANTY WARNING

Do not open any control boxes, motors or remote control devices (with the exception of the remote control and power down box battery compartments). The product warranty will be void if these components are tampered with. Do not attempt to alter component wiring or adjust or modify the structure of the product in any way or the warranty will be void. Any repair or replacement of base parts must be performed by authorized personnel.

LUBRICATION

This product is designed to be maintenance free. The lift motors are permanently lubricated and sealed—no additional lubrication is required. Do not apply lubricant to lift motor lead screws or any nylon nuts or the base may inadvertently creep downward from the elevated position.

HOSPITAL USE DISCLAIMER

This base is designed for in-home use only. It is not approved for hospital use and does not comply with hospital standards. Do not use this base with tent type oxygen therapy equipment, or use near explosive gases.

PRODUCT RATINGS

The base lift motors are ***not*** designed for continuous use. Reliable operation and full life expectancy will be realized as long as the lift motor operation does not exceed five (5) minutes over a forty-five (45) minute period, or approximately 11% duty cycle. Any attempt to circumvent or exceed product ratings will shorten the life expectancy of the product and may void the warranty.

The recommended maximum weight (including mattress) is 850 lb (385 kg) distributed evenly across the base. This product is not designed to support or lift this amount in the head or foot sections alone. ***Note: Exceeding the recommended weight restrictions could damage the base and void the warranty.***

For best performance, consumers should enter and exit the adjustable base with the base in the flat (horizontal) position. Avoid placing entire weight on head or foot section of the base, including when in the raised position. **DO NOT STAND ON BASE AT ANY TIME.**

UL (Underwriters Laboratories) recognized components.

CFR 1633 approved for use with most mattresses.

Assembled in USA.

SMALL CHILDREN / PETS WARNING

After the base is unboxed, immediately dispose of packaging material as it can smother small children and pets. To avoid injury, children or pets should not be allowed to play under or on the base. Children should not operate this base without adult supervision.

SERVICE REQUIREMENTS

Service technicians are not responsible for moving furniture, removing headboards and footboards or any items required to perform maintenance on the base. In the event the technician is unable to perform service due to lack of accessibility, the service call will be billed to the purchaser and the service will have to be rescheduled.

ACOUSTICS

LIFTING/LOWERING MECHANISMS

The lift/lower feature will emit a minimal humming sound during operation. This is normal.

During operation, the lift arm wheels make contact with the platform support of the base. This applies slight tension on the moving components and resonance is reduced to a minimum level. If excessive noise or vibration is experienced, reverse the movement action (up or down) of the base with the remote control. This should realign the base's activating mechanisms to the proper operational position.

LOCATION ENVIRONMENT

The level of sound experienced during operation is directly related to the location environment. For example, when a base is located on a hardwood floor with the massage feature in operation, a vibrating tone will be audible. To minimize this resonance, place a piece of carpet, or rubber caster cups, under each leg or caster of the base.

INSTALLATION

For installation and setup of the adjustable base, complete the following procedures, in the order indicated below and on the following pages.

STEP 1

Before discarding any packing materials, open the adjustable base shipping carton and verify the following items are included:

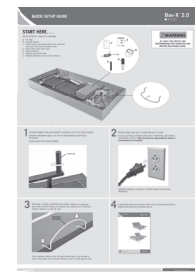
- (4) 7 inch legs
- (1) Remote Control
- (1) Mattress Retainer
- (1) Power Supply (includes power brick, electrical feed cord, and electrical power cord)
- (1) Sync Cable (split sizes only)
- (1) Warranty Activation Card
- (1) Owners Manual
- (1) Quick Setup Guide



OWNERS MANUAL



**WARRANTY
ACTIVATION CARD**



QUICK SETUP GUIDE



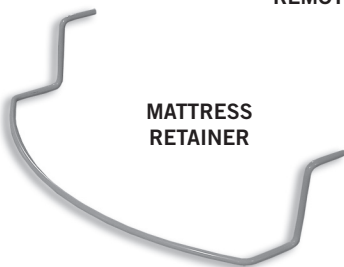
7" LEG



REMOTE CONTROL



POWER SUPPLY (power brick, electrical feed
cord, and electrical power cord)
*factory attached to base, no assembly
required*



**MATTRESS
RETAINER**



SYNC CABLE
split sizes only

INSTALLATION

STEP 2

Uncoil the main power cord and remote control and extend them out head end of base, then remove the hardware box from shipping container. Cut the zip-tie and remove the mattress retainer.

STEP 3

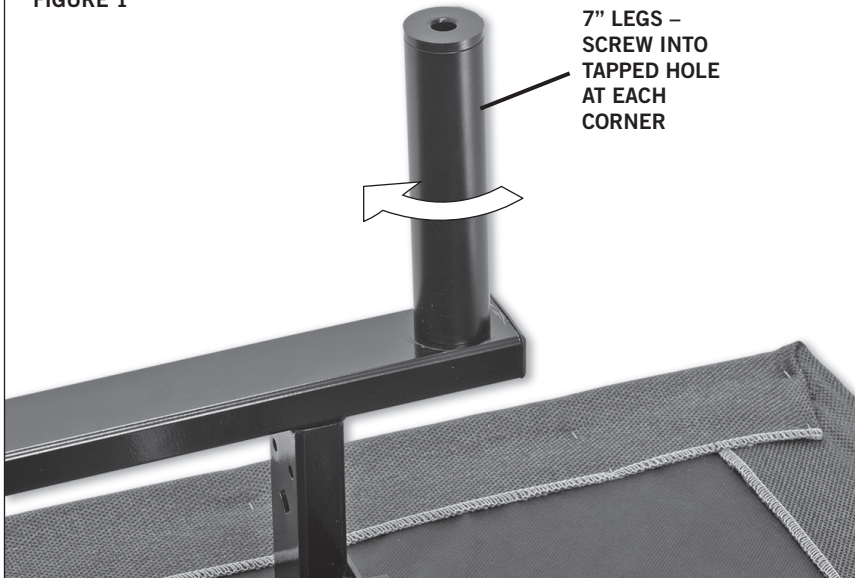
Install (4) legs into the base frame. Simply screw each leg into a tapped hole at each corner of the base frame (**FIGURE 1**).

READ ALL INSTRUCTIONS BEFORE USING



**POWER CORDS MUST NOT INTERFERE
WITH ANY ADJUSTABLE BASE
MECHANISMS.
DO NOT WEAVE CORDS THROUGH BASE
STRUCTURE.**

FIGURE 1



STEP 4

With base still in shipping carton, rotate the entire bottom carton on its edge and then gently rotate over so base is resting on its legs.

READ ALL INSTRUCTIONS BEFORE USING



**AT LEAST TWO PEOPLE ARE RECOMMENDED
FOR HANDLING AND MOVING ADJUSTABLE
BASE.**

STEP 5

Remove the shipping carton and plastic packaging from the adjustable base frame. Remove protective film from Micro-Hook™ strips, if applicable.

INSTALLATION

STEP 6

Plug electrical power cord into a working, grounded electrical outlet.

Note: An electrical surge protection device is recommended (not included).

STEP 7

Briefly activate all functions of the base with the remote control to verify all features are in working order. If base does not operate, refer to the *Troubleshooting* section of this manual.

STEP 8

Return base to the level position.

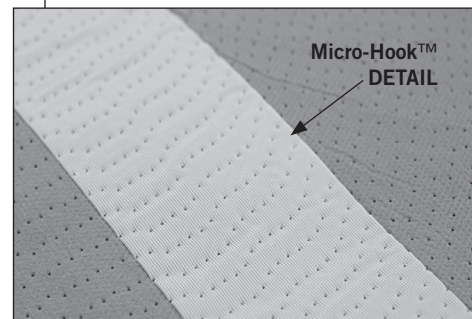
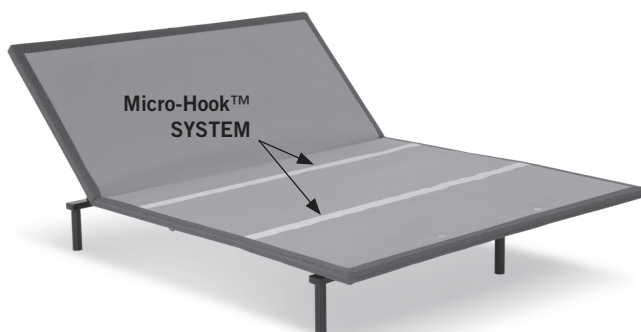
MATTRESS RETAINER INSTALLATION (OPTIONAL)

Mattress is equipped with a Micro-Hook™ system to captivate the mattress (**FIGURE 2**), but if desired a mattress retainer can also be used. If installing a mattress retainer, proceed to Step 9. If not installing a mattress retainer, proceed to Step 10.

IMPORTANT!

THIS PRODUCT SHOULD *NOT* BE USED WITH EITHER A DUST RUFFLE OR A MATTRESS ENCASEMENT. IF EITHER A DUST RUFFLE OR MATTRESS ENCASEMENT IS NEEDED, THEN A MATTRESS RETAINER BAR IS REQUIRED.

FIGURE 2

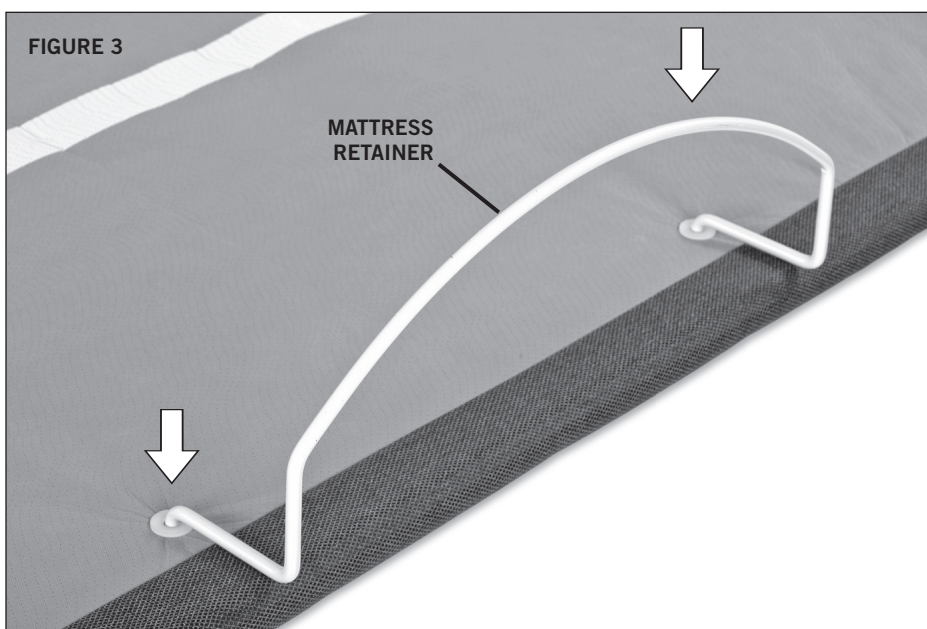


INSTALLATION

STEP 9

Install mattress retainer at the foot end of the adjustable base as follows:

- Locate grommets at foot end of base.
- Place mattress retainer ends into grommets in top surface of adjustable base (**FIGURE 3**). Press down until horizontal retainer section is flush against base.



STEP 10

Install mattress on adjustable base.

Typical adjustable base installation is now complete.

REMOTE CONTROL FUNCTION

HEAD DOWN BUTTON
Press and hold to lower the
head section.

HEAD UP BUTTON
Press and hold to raise the
head section.

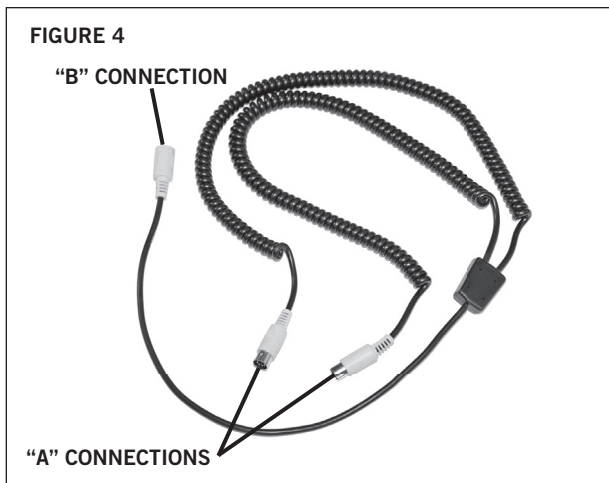


TANDEM SYNCING

To tandem sync two bases to operate as one base, perform the following procedure:

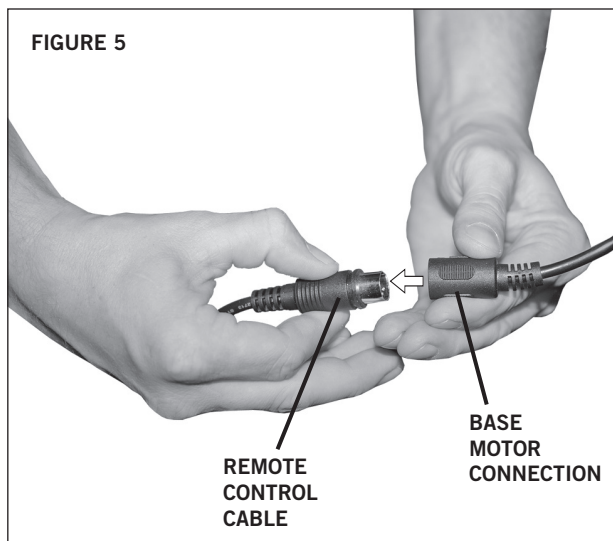
STEP 1

Locate the sync cable (**FIGURE 4**).



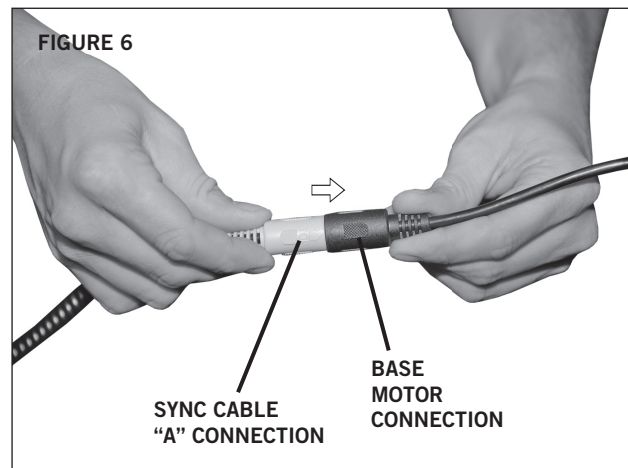
STEP 2

Unplug both remote control cables from respective base motor connections (**FIGURE 5**).



STEP 3

Plug sync cable "A" connections into base motor connections (**FIGURE 6**).



STEP 4

Plug (1) remote control cable into sync cable "B" connection. Second remote is not needed. Retain for future use.

One remote control will now operate both bases.

TROUBLESHOOTING

In the event the adjustable base fails to operate, investigate the symptoms and possible solutions provided in the chart below:

SYMPTOM	SOLUTION
Remote control will not activate base.	<ul style="list-style-type: none"> • Verify power cord is plugged into a working, grounded electrical outlet. <i>A grounded, electrical surge protection device is recommended.</i> Test outlet by plugging in another working appliance. • Verify remote control is plugged into the motor. • Unplug power cord, wait 30 seconds and plug in to reset electronic components. • Electrical circuit breaker may be tripped. Check electrical service breaker box to verify. • Defective surge protection device or electrical outlet. Test outlet by plugging in another working appliance.
Head or foot section will elevate, but will not return to the horizontal (flat) position.	<ul style="list-style-type: none"> • Base mechanism may be obstructed. Elevate base and check for obstruction. Remove obstruction. • Head section may be too close to the wall. • Headboard may be too close the edge of the mattress. Verify a 1.5" (38.1mm) to 2" (50.8mm) distance between headboard brackets and mattress. Adjust if required.

1 YEAR, 3 YEAR AND 25 YEAR LIMITED WARRANTY

In this warranty: “**Adjustable base**” means the adjustable bed foundation sold by L&P to the dealer. The “adjustable base” does not include the mattress. “**L&P**” means Leggett & Platt, Incorporated. “**Purchaser**” and “**You**” both mean the consumer who is the original purchaser of this adjustable base made by L&P. This warranty is not transferrable. “**Warranty Commencement Date**” means either (i) the date You purchased a new and unused L&P adjustable base or (ii) the date of manufacture of this adjustable base if You purchased an L&P adjustable base that has been used as floor or display model. L&P warrants this adjustable base to You on the terms and over the reducing periods of time set out below. All warranty claims require notice from You to be given to L&P in the manner set out below, and to be received by L&P inside the applicable warranty time period.

1ST YEAR FULL WARRANTY

For the first year from the Warranty Commencement Date, your adjustable base is warranted against non-excluded defects in L&P’s workmanship or materials. During the first year from the Warranty Commencement Date, L&P will repair or replace (at no cost to You) any defective adjustable base part, and L&P will pay all authorized labor and transportation costs associated with the repair or replacement of any parts found to be defective.

2ND & 3RD YEAR LIMITED WARRANTY

During the second and third year from the Warranty Commencement Date, L&P will replace any adjustable base part found to be defective and not excluded by this warranty. You are responsible to pay all service and transportation costs related to the costs of receiving and installation of the new part.

4TH YEAR TO END OF 25TH YEAR LIMITED WARRANTY

Starting in the fourth year from the Warranty Commencement Date and through to the end of the 25th year from the Warranty Commencement Date, L&P will replace steel and mechanical base parts found to be defective and not excluded by this warranty. **This warranty does not cover any electronics, electrical components, drive motors or massage motors.** You are responsible to pay all service and transportation costs related to receiving and installation of the new part and a portion of the cost of the replacement steel and mechanical part, based on the number of months that the base has been owned by you since the fourth anniversary of the Warranty Commencement Date. By the end of the 25th year, no portion of the replacement cost is covered by L&P. You will be required to pay 1/22nd of the then current replacement cost of the part multiplied by the number of years past the third year from the Warranty Commencement Date. This portion is calculated using the following formula: Cost of the part divided by 22 [being the number of years in years 4 to 25 inclusive], multiplied by the number of years you have owned the base since the end of the first 3 years. For example, if you make a claim for a part eligible for this warranty in the 5th year since the Warranty Commencement Date, you would be responsible for paying: \$100 part cost divided by 22, multiplied by 2 = \$9.09.

ADDITIONAL TERMS AND CONDITIONS

This warranty requires notice to be given to L&P of any claim for repairs or replacement parts.

EXCLUSIONS:

This warranty does not apply; (a) to any damage caused by You; (b) if there has been any repair or replacement of adjustable base parts by an unauthorized person; (c) if the adjustable base has been mishandled (whether in transit or by other means), subjected to physical or electrical abuse or misuse, or otherwise operated in any manner inconsistent with the operation and maintenance procedures outlined in the Owner’s Manual and this warranty; (d) to damage to mattresses, fabric, cables, electrical cords or items supplied by dealers (contact the dealer for warranty information on these items); (e) if there has been any modification of the adjustable base **without prior written consent by L&P**; or (f) to costs for unnecessary service calls, including costs for in-home service calls solely for the purpose of educating You about the adjustable base or finding a satisfactory power connection.

This warranty will be void if either the recommended weight restriction is not followed (refer to the advisory section of the Owner’s Manual) or if You sell or give or transfer the base to another person.

Any repairs to or replacement to Your adjustable base or its components under the terms of this limited warranty does not extend the applicable warranty from the Warranty Commencement Date. This time limitation may not apply in some jurisdictions, including the Province of Quebec.

The decision to repair or to replace defective parts under this warranty shall be made, or cause to be made, by L&P at its option and in its sole discretion.

Continued on next page...

1 YEAR, 3 YEAR AND 25 YEAR LIMITED WARRANTY

Repair or replacement shall be the sole remedy of the Purchaser. There shall be no liability on the part of L&P for any special, indirect, incidental, or consequential damages or for any other damage, claim, or loss not expressly covered by the terms of this warranty.

This limited warranty does not include reimbursement for inconvenience, removal, installation, setup time, loss of use, shipping, or any other costs or expenses. L&P and its service technicians will not be responsible for moving furniture or any other items not attached to the adjustable base in order to perform service on the adjustable base.

It is the sole responsibility of You to provide adequate space and accessibility to the adjustable base. In the event that the technician is unable to perform service due to lack of accessibility, the service call will be billed to You and the service will have to be rescheduled.

L&P makes no other warranty whatever, express or implied, and all implied warranties of merchantability and fitness for a particular purpose are disclaimed by L&P and excluded from this agreement.

Some American States do not allow the exclusion or limitation of incidental or consequential damages, so the above limitation or exclusion may not apply to You.

This warranty gives You specific legal rights, and You may also have other rights, which may vary from jurisdiction to jurisdiction. This warranty is valid in all 50 American States, the District of Columbia, Puerto Rico, and all 10 Provinces and 3 Territories of Canada.

For customer service under this limited warranty, give notice to L&P by mail, phone, email or online to the addresses set out below:

Leggett & Platt, Incorporated
PO Box 668
Lexington, North Carolina 27293

toll free phone: 1.800.888.3078
online: lpadjustablebases.com

**PLEASE DO NOT CONTACT YOUR RETAIL DEALER
OR ANY OTHER SERVICE PERSONNEL**

NATIONWIDE CUSTOMER SERVICE toll free: (800) 888-3078

© 2016 Leggett & Platt Adjustable Bed Group, a division of Leggett & Platt Incorporated

